

2024

Over 36 years of Quality Hunting

KLOWWA

HUNTING SERVICES
RATON, NEW MEXICO



WHY HUNT WITH KIOWA HUNTING SERVICE IN NEW MEXICO?

- New Mexico is known for its big game populations and its quality of animals.
- Kiowa offers both private land and public land hunts. Our private land hunts allow you to purchase across-the-counter licenses and the public land hunt licenses are by application and draw.
- Kiowa offers several levels of public land guided hunts to meet your needs and budget. There are fully guided and accommodated hunts, limited 2 day guided hunts, after which you may continue to hunt, with no accommodations or meals. These include the use of our outfitter number to apply for the draw, which can significantly increase your odds of drawing. **WE DO NOT CHARGE FOR THE USE OF THE OUTFITTER NUMBER. IT COSTS US NOTHING FOR YOU TO USE IT, SO WHY PAY OTHER OUTFITTERS MONEY FOR SOMETHING THAT YOU CAN GET FOR FREE?!** Please see the following pages for a full description of the hunts offered.
- Kiowa Hunting Service is licensed by every National Forest (6) located in New Mexico, every Bureau of Land Management District (5) in the State, The State Land Office and White Sands Missile Range. We can provide you a public land hunt for any species and for any public location in New Mexico. We are one of the very few outfitters that can give you multiple options to apply for hunts throughout the State of New Mexico. Most outfitters are licensed for one or two National Forests or one or two BLM districts and cannot offer you multiple options.
- Kiowa has been in business for 36 years and maintains a professional relationship with landowners, federal land agencies and state agencies. Kiowa is licensed by the State of New Mexico and by the public land use agencies upon whose property we hunt.



WHY HUNT WITH KIOWA HUNTING SERVICE IN COLORADO?



- Kiowa leases one of the premier elk hunting ranches in Colorado. The ranch is located within GMU 83, and is one of the few totally private land game units in the state.
- Kiowa's ranch provides you the opportunity to hunt for and to take 300 B&C class bulls. This ranch consistently produces this quality of bull.
- Kiowa provides hunts on this ranch for archery and rifle.
- Colorado offers across-the-counter licenses for archery hunts. The rifle hunts are by draw requiring one preference point to draw for sure and we often draw with 0 points. The landowner has license vouchers and will sell them to you to allow for you to buy a license. The vouchers are strictly between you and the landowner.
- Kiowa offers you the opportunity to have a quality experience with use of the lodge, guides, catch and release fishing, and the opportunity to take that "big" bull that you have always thought about.
- Please look over the information contained in our brochure. Contact us for all your hunt and draw needs, or if you have any questions.

Have a safe and fun 2024 hunting season!

NEW MEXICO - GUIDED ONLY HUNTS WITH NO SERVICES

This hunt will allow you to apply for a PUBLIC LAND elk or deer hunt, using the outfitter number to increase your odds of drawing a license. A guide will be furnished for the first two days of your hunt, which is mandatory by Game and Fish regulations. You may also book a guided only hunt for one of the following time frames: five days to nine days depending on the weapon type of your hunt.

You may apply in any unit that you would like, unlike other outfitters that only operate in a hand full of units and do not offer you opportunities to apply in different areas. We DO NOT operate in wilderness areas, i.e. units 45 and



16B/22 or any other unit that is comprised of a majority of wilderness area. Kiowa also separates itself from other outfitters, because **WE DO NOT CHARGE ANYTHING FOR THE USE OF OUR OUTFITTER NUMBER**, to increase your draw odds. Kiowa Hunting Service is licensed by ALL of the national forests in the state and by all of the Bureau of Land Management Districts in the state. We are also licensed by the State Land office.



One guide will be provided for the first two days of your hunt, **MANDATORY BY STATE LAW**, when you use the outfitter number for a tag. Kiowa will furnish one guide for all hunters that are on the successful application. If you want an extra guide for the two days, there will be an additional charge of \$300.00 per hunter in the party. If you decide that you want a guide only hunt, for five days, seven days or nine days we will guide only on a 1x1 or 2x1 basis.

Additional guides or additional days must be determined at the time of the booking and may not be modified unless additional personnel are available.

GUIDED ONLY HUNTS NO SERVICES

Hunt Dates

Valid in any unit, EXCEPT units comprised mainly of a wilderness area

Hunt Prices

2 days 1x1: \$1,600 + tax
2 days 2x1: \$1,400 + tax
2 days 3x1: \$1,400 + tax
2 days 4x1: \$1,200 + tax
5 days 1x1: \$5,300 + tax
5 days 2x1: \$4,300 + tax
7 days 1x1: \$5,800 + tax
7 days 2x1: \$4,800 + tax
9 days 1x1: \$6,300 + tax
9 days 2x1: \$5,300 + tax

Application Deadline:
March 20, 2024

kiowahunting.com
575-445-9330

PARTIALLY GUIDED AND ACCOMMODATED HUNTS

PUBLIC LAND RIFLE, BOW, AND MUZZLELOADER

These hunts are only offered in **Game Management Units 10, 12, 51 and 52** for all weapons types (rifle, muzzleloader and bow). These hunts are designed for those hunters who are looking for a quality hunt, feel confident about hunting elk on their own, want a guide for part of their hunt, but do not want the hassle of having to bring and set up a camp.

These are the answers to the most frequently asked questions about the partially guided hunts:

1. We have one base camp for units 10 and 12 and we have one base camp for units 51 and 52. This camp is centrally located to access both of the units easily. We do not provide individual camps for groups.

6. This hunt has a higher success rate than the two-day guided only hunts and the reason is simple: on the two-day guided only hunts we are there two days and leave... no assistance, no additional knowledge, nothing else is furnished. In the partially guided and accommodated hunt you can receive up to date knowledge of where elk are seen or heard about, additional areas to hunt, and assistance with retrieval. While you are hunting, the staff is out scouting for you. This additional information will allow you to move to areas that have recently been seen with elk, giving you the potential for a higher success rate. Unless you are intimately knowledgeable of the area you are hunting and know where to look after two days, you are on your own.

Unit Descriptions:

The units where we offer this service can be described as follows: **Unit 51 and Unit 52** are located in North Central New Mexico. **Unit 52** is approximately 300,000 acres in size and **Unit 51** is approximately 380,000 acres. Both of these units are in a roadless/wilderness area that prohibits off road vehicles and off road traffic of any type. This is a public draw unit and it usually offers a very high opportunity to draw a license with the use of our outfitter number.

Units 10 and 12

These areas consist of National Forest, Bureau of Land Management, New Mexico State trust and private land holding. The area is located south and west of Grants, New Mexico and is on the north end of the Gila range. I consider **Unit 10** a sleeper unit. While it has smaller elk numbers, it has a good population of quality elk that has the potential to produce for you the bull of a lifetime. Due to the makeup of the unit, which includes Native American reservations, National monuments, and private land holdings, these areas provide a bull the opportunity to gain age and, consequently, size. We have taken bulls from this unit that are greater than 300 B&C and occasionally one better than 350 B&C.

Unit 12 is predominately private land

2. We do not pack people into areas.
3. I do not know how many people are in camp as it is based on the draw.
4. In these camps, Kiowa provides the cook, meals, snacks, water and soft drinks and a person knowledgeable of the area to send you to where we feel you will find elk. We provide tents, cots, pads, shower area, lights and heat, and rest rooms or porta-potties.
5. The hunter is responsible for the license, personal gear, bedroll, weapon and transportation to and from camp and during your hunt without the guide.



PUBLIC LAND

ELK HUNTS

Hunt Dates

Units 10, 12, 51, & 52: Archery 7 Day Hunts

September 7-13, 2024
September 18-24, 2024

9 Day Hunts

September 6-14, 2024
September 16-24, 2024

Unit 10 Rifle & Muzzleloader

Muzzleloader: October 5-9, 2024
Rifle: October 12-16, 2024

Unit 12 Rifle

Rifle: October 5-9, 2024
Rifle: October 12-16, 2024
Rifle: October 19-23, 2024
Rifle: November 9-13, 2024

Unit 51 Rifle & Muzzleloader

Rifle: October 5-9, 2024
Rifle: October 12-16, 2024
Rifle: October 19-23, 2024
Muzzleloader: Dec. 2-6, 2024

Unit 52 Rifle & Muzzleloader

Muzzleloader: Oct. 5-9, 2024
Rifle: October 12-16, 2024
Rifle: October 19-23, 2024

Hunt Prices

Rifle/Muzzleloader Elk - 5 days

1 hunter: \$2,400 + tax
2-3 hunters: \$2,200 + tax
4+ hunters: \$2,000 + tax

Archery Elk - 7 day hunts

1 hunter: \$2,900 + tax
2-3 hunters: \$2,600 + tax
4+ hunters: \$2,300 + tax

Archery Elk - 9 day hunts

1 hunter: \$3,500 + tax
2-3 hunters: \$3,200 + tax
4+ hunters: \$2,900 + tax

Application Deadline:
March 20, 2024

and checkerboard areas. There are good areas of Bureau of Land Management properties located on East and South sides of the hunt unit. This unit is known for big bulls but the area is checker-boarded and you need to make sure that you know where you are as you hunt. The drawing odds for this unit are difficult.

GUIDED ELK HUNTS - FULLY ACCOMMODATED

CARSON NATIONAL FOREST- UNIT 51 & UNIT 52



Units 51 and 52 are our main units on the Carson, but we offer hunting in all units of the Carson National Forest, including units 2, 50, 53, and the Valle Vidal in unit 55A. We offer hunts utilizing all weapon types: rifle, muzzleloader, and archery. The units on the Carson are all very large running from 100,000 acres to almost 400,000 acres. The vegetation runs from timberline to sagebrush flats so a hunter can find an area that suits his capabilities. Most of these units have Motor Vehicle restrictions and there is no off road or minimal road traffic allowed. For a description of units 51 and 52 see the previous page.



These units offer the hunter easy access, an excellent elk population, and limited hunting pressure. This is a public draw unit and it usually offers a good opportunity to draw a license with the use of the outfitter number.

- **The cost of hunt includes:** the use of the Outfitter Number for drawing a license, the appropriate number of guides, accommodations, meals, courtesy transportation during the hunt, retrieval of game and capping for trophy preparation of the animal.
- **The hunter is responsible for:** applying for the license (with our help), their personal items including bedroll and weapon, and transportation to and from camp.

CARSON NATL. FOREST UNIT 51 & 52

Hunt Dates

Unit 51 and 52 Archery 7 Day Hunts

September 7-13, 2024
September 18-24, 2024

9 Day Hunts

September 6-14, 2024
September 16-24, 2024

Unit 51 Rifle & Muzzleloader

Rifle: October 5-9, 2024

Rifle: October 12-16, 2024

Rifle: October 20-23, 2024

Muzzleloader: Dec. 2-6, 2024

Unit 52 Rifle & Muzzleloader

Muzzleloader: Oct. 5-9, 2024

Rifle: October 12-16, 2024

Rifle: October 19-23, 2024

Hunt Prices

Archery

7 Day 2x1: \$5,800 + tax

7 Day 1x1: \$6,800 + tax

9 Day 2x1: \$6,800 + tax

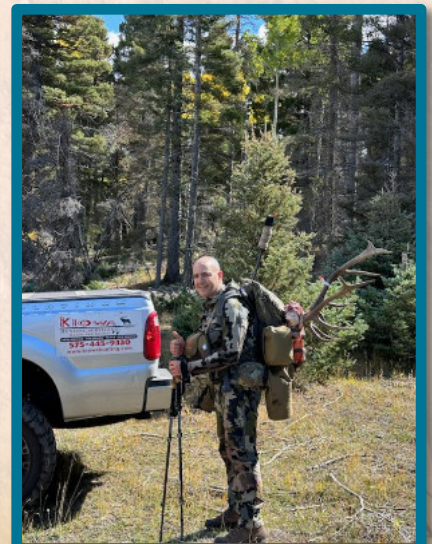
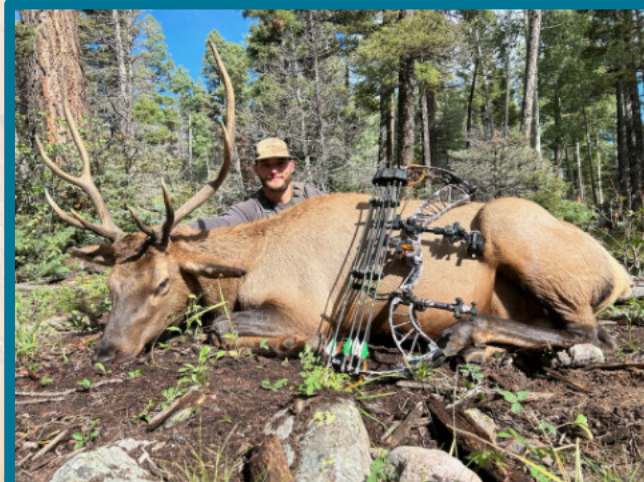
9 Day 1x1: \$7,300 + tax

Rifle & Muzzleloader

2x1: \$5,000 + tax

1x1: \$6,000 + tax

Application Deadline:
March 20, 2024



kiowahunting.com
575-445-9330

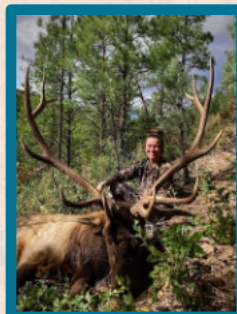
Public Land Elk

GUIDED ELK HUNTS - FULLY ACCOMMODATED LINCOLN NATIONAL FOREST - UNIT 34, 36, AND 37

We offer bow, muzzleloader and rifle hunts in these units. These units are known for big bulls and excellent numbers. The guides for these units are very knowledgeable of the hunt area, are excellent hunters, and have a history of getting clients on big bulls. These units are excellent, making them extremely popular and in high demand by sportsmen.

Because of this it can be very difficult to draw a tag. These units have some of the best bull-to-cow ratios of any unit in the state. The odds of you drawing this tag far surpasses those of the Gila Units. Game Management Unit 36 is the easiest to draw and has the highest bull-to-cow ratio in the state at 71:100, according to Game and Fish. This is your chance to draw a tag and have a guided hunt to go with it for the cost of the landowner tag. At a minimum, you should make this one of your three choices on your application. We only offer fully-guided and accommodated hunts **OR** 2-day guided hunts with no accommodations or meals in these units.

- **The cost of the hunt includes:** accommodations, meals, courtesy transportation during the hunt, assistance in the retrieval of the harvested animal, and capping for trophy preparation of the animal.
- **The hunter is responsible for:** applying for the license (with our help), and their personal gear including bedroll and weapon.



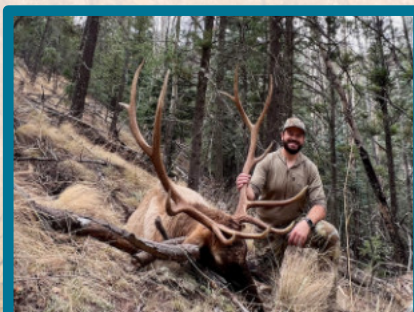
GILA NATIONAL FOREST

These are THE bulls that you hear about. In the past the Kiowa team has taken bulls up to 383 and our hunters often take bulls in the 340 and 350 class. Everyone wants to hunt the Gila and some do. Great hunts, but understand that if you apply for these tags, use one choice and not three because the odds of drawing a Gila tag are around 5% or less. Not all Gila units are equal and some units and hunts are easier to draw than others. The best way to determine the easier to draw units is to give us a call and we can discuss them. Great hunt,

great guides and great bulls if you draw, but consider additional options for your application.

We only offer fully-guided and accommodated hunts **OR** 2-day guided hunts with no accommodations or meals in these units.

- **The cost of the hunt includes:** Accommodations, meals, courtesy transportation during the hunt, retrieval of the harvested animal and capping for trophy preparation of the animal.
- **The hunter is responsible for:** applying for the license (with our help), and their personal gear including bedroll and weapon.



LINCOLN NATL. FOREST UNITS 34, 36 & 37

Hunt Dates

Unit 34, 36, and 37 Archery Hunts 7 Day Hunts

September 7-13, 2024
September 18-24, 2024

9 Day Hunts

September 6-14, 2024
September 16-24, 2024

Unit 34

Rifle, Youth only, or Mobility Impaired:
October 5-9, 2024

Muzzleloader: Oct. 12-16, 2024

Rifle: October 19-23, 2024

Unit 36

Muzzleloader: October 5-9, 2024

Rifle: October 12-16, 2024

Rifle: October 26-30, 2024

Unit 37

Muzzleloader: October 1-5, 2024

Rifle: October 14-18, 2024

Hunt Prices

Archery

7 Day - 1x1: \$6,800 + tax

7 Day - 2x1: \$5,800 + tax

9 Day - 1x1: \$7,300 + tax

9 Day - 2x1: \$6,800 + tax

Rifle & Muzzleloader

2x1: \$5,000 + tax

1x1: \$6,000 + tax

Application Deadline:
March 20, 2024

GILA NATL. FOREST

Hunt Dates

All Gila Units

Archery Hunts - 7 days

September 7-13, 2024
September 18-24, 2024

Archery Hunts - 9 days

September 6-14, 2024
September 16-24, 2024

Rifle, Muzzleloader and MI Hunts

Check Game and Fish brochure for dates corresponding to your choice of unit. Hunts are available in any Game Management unit within the Gila National Forest, EXCEPT in units 16B-22.

Hunt Prices

Archery

7 Day - 2x1: \$5,800 + tax

7 Day - 1x1: \$6,800 + tax

9 Day - 2x1: \$5,800 + tax

9 Day - 1x1: \$7,300 + tax

Rifle & Muzzleloader

2x1: \$5,000 + tax

1x1: \$6,000 + tax

Application Deadline:
March 20, 2024

info@kiowahunting.com

CIBOLA NATIONAL FOREST UNITS 10 AND 12

These units are known for big bulls and a good number of elk. The number of elk in these units are not as high as in other units, however, the size of the units, the national monuments, closed areas, and private land holdings within the hunt unit allow for bulls to gain age and, consequently, size. The guides for these units are very knowledgeable of the hunt area, are great hunters, and have a history of getting clients on bulls.

This area is lower in elevation than other units, the terrain is easier than some units, and there is a network of roads for access throughout the unit. The camp is located on private property and offers easy access to most of the unit. The camp is located on the south end of unit 10 and we will use this camp to access the unit 12 hunts. This unit has normal dates for archery hunts but only one muzzleloader and one rifle hunt, which is another reason that the elk have a chance to get bigger here. We offer all three types of hunts on the Cibola: a 2-day guided hunt with no accommodations, a 2-day guided hunt with accommodations and meals, and a fully guided hunt with accommodations and meals.

- **The cost of the hunt includes:** accommodations, meals, courtesy transportation during the hunt, retrieval of the harvested animal, and caping for trophy preparation of the animal.
- **The hunter is responsible for:** applying for the license (with our help), arriving in camp, or meet at motel (cost is hunter's responsibility), personal gear, weapon, license and stamps, and care for the animal after it arrives in camp.



CIBOLA NATL. FOREST UNITS 10 & 12

Hunt Dates

Unit 10 or 12 Archery Hunts

7 Day Hunts:

September 7-13, 2024
September 18-24, 2024

9 Day Hunts:

September 6-14, 2024
September 16-24, 2024

Unit 10 Rifle & Muzzleloader Hunts

Muzzleloader: October 5-9, 2024

Rifle: October 12-16, 2024

Unit 12 Rifle Hunts

October 5-9, 2024
October 12-16, 2024
October 19-23, 2024
November 9-13, 2024

Hunt Prices

Archery

7 Day - 2x1: \$5,800 + tax
7 Day - 1x1: \$6,800 + tax
9 Day - 2x1: \$6,800 + tax
9 Day - 1x1: \$7,300 + tax

Rifle & Muzzleloader

2x1: \$5,000 + tax
1x1: \$6,000 + tax

Application Deadline:
March 20, 2024

kiowahunting.com
575-445-9330

PRIVATE LAND (GUARANTEED LICENSES) BULL ELK RIFLE

These are Guaranteed License hunts that occur on private ranches in New Mexico. All of the following ranches have the potential to produce 300 B&C class bulls for the hunters.

Hunts begin in early September with archery and in early October with rifle and muzzleloader to take advantage of the rut and the bugling of the bulls. You will be hunting where we know there are animals and we have a high percentage of shot opportunity for a hunter to harvest bulls.

Each private land ranch differs by terrain, elk population, the number of hunters on the ranch per hunt, accommodations, and other

variables. These hunts are not very physical. Call us and we'll discuss the options with you and pair you with a ranch that is suitable for what kind of hunt you would like.

The cost of the hunt includes: private landowner authorization, meals, guide, accommodations on some hunts, courtesy transportation during the hunt, and caping for trophy preparation of the animal.

The hunter is responsible for: their personal gear, weapon, transportation to the prearranged meeting area, meat processing, taxidermy, motel costs and NM elk license.

NM PRIVATE LAND ELK HUNTS

Hunt Dates

Archery

Sept. 1 - 15, 2024 any seven days
Sept. 15-24, 2024, any seven days

Rifle: Any Five Days

Units 7 & 10:

Oct. 2 to Dec. 31, 2024

Hunt Prices

Unit 10

1x1: \$9,000 + tax

2x1: \$8,000 + tax

Unit 7

1x1: \$8,000 + tax

2x1: \$7,000 + tax

NO DRAW OR APPLICATION

★ PRIVATE LAND ELK - UNIT 7 ★

This ranch is 12,000 acres in size and is situated north of Grants, New Mexico, in GMU 7 in the western center of the state just north of I-40, west of Albuquerque. The ranch is located about a 45 minute drive out of Grants, New Mexico and at an elevation of approximately 7,000 feet.

We have hunted this ranch for the last seven years and have maintained a 90%+ success rate for both archery and rifle. This ranch is challenging, but has been highly successful. The ranch is hunted very lightly per hunt, thus the high success rate of the hunt. These are five- and six-point bulls and occasionally we will find a bull that will exceed 300 B&C. This is not a "get out and hike 10 miles a day hunt" but the hunter must be able to cover some distance to get to the elk. This is not a truck hunt and vehicles are used only minimally. We operate the hunt out of Grants, New Mexico.

Accommodations will be in a motel in Grants, at hunter's expense, and the meals will be in restaurants in Grants at Kiowa's expense. The typical day will be to travel from Grants to the Ranch to begin the hunt. Once on the ranch, we will be there all day. There is a



bunkhouse on the ranch where we have lunch and take a break during the day. There are no modern facilities at this bunkhouse.

After your harvest your animal will be skinned and quartered. There is a meat processor in Grants that can process your meat quickly. The head will be caped and you can take your trophy with you or we will relay the trophy to a taxidermist that we utilize.



PRIVATE LAND ELK UNIT 10

This ranch is situated west of Grants, New Mexico, which is west of Albuquerque. Elevation is approximately 6,800 feet. We have hunted this ranch for the last five years and have maintained a 90%+ success rate for rifle bull elk hunts, so it's highly successful, but not extremely physical or challenging. Though not overly physical, the hunter must be able to cover some distance to get to the elk.

The ranch is hunted very lightly per hunt, thus the high success rate. There are some exceptional bulls that can be found on this ranch and in the past we have taken bulls up to 370 B&C. These hunts are

very limited and vacancies are rare. Our policy on private land hunts is to not book in advance several years. We offer the hunters that hunted with us this year the first right to return. Only if they do not rebook do we open up our bookings for the ranch.

We operate the hunt out of Grants, New Mexico. Accommodations will be in a motel in Grants, at hunter's expense, and the meals will be in restaurants in Grants at Kiowa's expense. Kiowa Hunting reserves the right to limit the number of non-hunters participating in the hunt to maintain quality. For details on what Kiowa furnishes and what the hunter furnishes please see the top of page 8.



COLORADO PRIVATE LAND ELK HUNT

This hunt occurs in Southeastern Colorado in Game Management Unit 83. This is a great hunt with the potential of a once-in-a-lifetime harvest and this trophy class ranch gives you the opportunity to take that 300 plus B&C bull. This hunt, though easier than some, is still an elk hunt and that translates into getting out and hunting. You are hunting at 7,500 to 10,000 feet in elevation, and the lodge is located at 9,500 feet, so the better your physical condition, the better your odds for success. This is not about riding around in a vehicle and trying to find an elk... you start the morning out

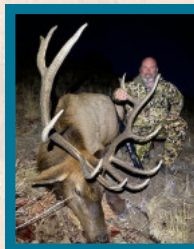
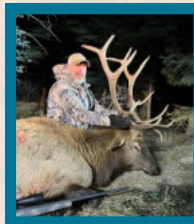
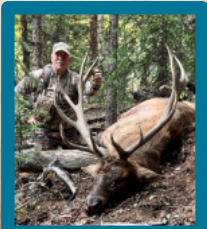
walking and you end the evening walking. Come prepared. Covering multiple miles on any outing is a normal situation. It is a morning and evening hunt and not a hike the hills all day type of hunt.

In a normal weather year, this area will hold a tremendous number of bulls. The area hunted is 11,000 plus acres and runs from sagebrush flats with wetlands and alfalfa fields, to timberline and above. We will hunt this ranch during the archery seasons, and the second, third, and fourth rifle hunts.

All rifle hunts are by draw with the application window for Colorado closing April 2nd, 2024. In 2023 we had a 83% draw rate for the rifle hunts. If you fail to draw then you may purchase a license voucher from the rancher that will enable you to buy a license across the counter.

Cost of hunt includes: guide, courtesy transportation during the hunt, private land trespass, accommodations in the ranch lodge, meals, trophy preparation of the animal, and put and take trout fishing. Airport pickup can be arranged if flying into Alamosa, Colorado.

Hunter is responsible for: hunting license, personal gear, weapon, and arrival at camp.



CO PRIVATE LAND ELK HUNTS

Hunt Dates

Archery - across counter licenses
September 9-14, 2024
September 17-22, 2024
September 25-30, 2024

Rifle

October 26-30, 2024
November 9-13, 2024
November 20-24, 2024

Hunt Prices

2x1: \$8,000 each
1x1: \$9,000 each

**Application Deadline for rifle
hunts: April 2, 2024**



kiowahunting.com
575-445-9330

YOUTH AND SENIOR CITIZEN HUNTS

This year we had a considerable number of youth hunters apply and harvest animals with us. We were not 100% on harvest but we did achieve that on shot opportunity.

We encourage youth hunting to enlarge the hunting base, so we would like to encourage you to put in for the youth hunts. There are several application services available to you that will float the cost of the license and state application fee and give you their free application service for youth hunters. Worldwide Trophy Adventures and The Draw also float the license fees for you and your youth hunter. If you draw you will pay for the license, but you are not out money on your credit card for the application and license fees. You combine those features with the free use of the outfitter number from Kiowa Hunting and you are in a win/win situation. Think seriously about it and let's go hunting.

Finally, if you have a youth hunter and they successfully draw, Kiowa suggests you come on the hunt with them, share the experience, and make it a family event. We do not charge a non-hunting fee for the family to be there. In fact, we strongly encourage it.

New Mexico offers special dates for youth hunters and for all species... Bighorn sheep, Elk, Deer, and Antelope. The youth hunts are prime dates in prime areas and are just great hunts. Your youth hunter can apply for different hunts, but the these hunts will make you jealous of what and where it is offered. To be eligible for these New Mexico hunts the youth must be 17 years of age or younger on the opening date of the hunt and must possess a hunter education number or mentor-youth number which is valid for all species but sheep and elk.

Not to leave the Senior Citizens out, New Mexico offers an off-range Oryx hunt for seniors 70 years and older. It's a great hunt and is normally less physically challenging. These hunts are reserved for people age 70 and above and are in high demand. This hunt is currently the only one offered for people that qualify due to age.



Who Do We Hunt With?

Even though we are busy most of the fall, we occasionally find time to go hunting with other outfitters and in other states. We're often asked who we recommend and we do not recommend anyone we have not hunted with. We know numerous outfitters but do not go in their camps and do not know details about their operations, so we cannot truthfully recommend them. So, as a service to our customers here are two outfitters that "we hunt with," have been in their camps, and know how they operate. We have no reservations about

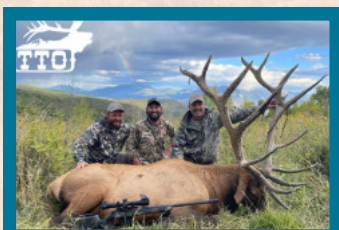
recommending them if you want to hunt in Colorado or Arizona.

The three different states have three different draw procedures: New Mexico has no preference or bonus points and is a strict lottery, you are in the draw. Colorado has a preference point system and unless you have enough points to draw, you are not in the draw. Arizona has a bonus point system where you are given bonus points for the years that you have applied and you may draw, even with no points. This is a simplistic view of the draws.

COLORADO

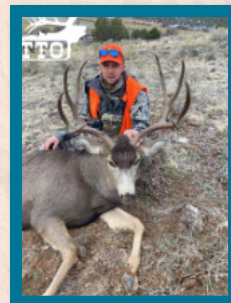


New Mexico's license lottery is a draw system. Unfortunately, there are always some hunters that do not draw. After the draw we receive numerous inquiries of where hunters can go, such as across the counter hunts, public hunts, or



private land voucher hunts. Colorado is a "preference point" state, so if you have enough preference points there are some truly great hunts that you can draw, and some hunts are good with no points. When I or my family hunt in Colorado we only hunt with one outfitter and that is "Twisted Time Outfitters of Colorado". Chad Kribbs is the go-to guy for Colorado elk and deer hunts. You can look him up at:

www.twistedtimeoutfittersco.com
or call him at 970-250-1052.

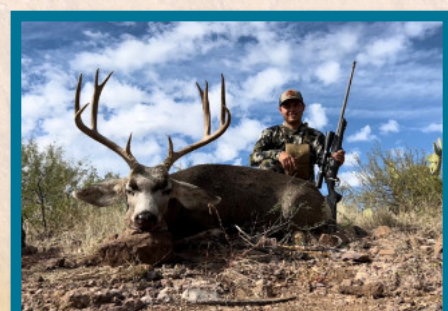
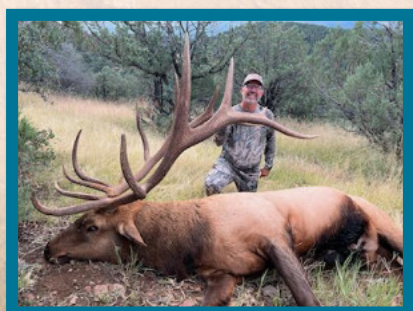


ARIZONA



Arizona is a bonus points system, which means that you may draw a hunt with 0 bonus points. The odds are against you, but it does happen every year. Our go-to man in Arizona is Grant Hottman with Grant's Guide Service. Visit www.grantsguideservice.com or call Grant at 602-399-0337.

Grant started out guiding for us and still does guide for us when he is not guiding his own hunters in Arizona. Grant is knowledgeable about the Arizona Draw system, the units that are good, and where you can go with across-the-counter tags or a limited number of bonus points and how to do it. Grant guides for elk, mule deer, bighorn sheep and all the big game species in Arizona. Grant is a very good hunter and takes some tremendous animals. The difficulty in Arizona is drawing the tag, but if you do you will be into great hunts.



kiowahunting.com
575-445-9330



OUTFITTER RAMBLINGS



The interesting part of this business is the people that you meet, visit with, talk with, and the situations that occur or could be prevented if things were handled differently. With this in mind, these are my thoughts on various subjects and hopefully they will assist you in planning your hunt.

The Application System for Public Land Hunts

The first step in the application system is to be honest with yourself about what you desire in a hunt. If you only want a huge bull or buck, say so. But if you want to hunt elk and don't care on the size of the bull or buck, say so.

There are no hidden gems and little spots in New Mexico that are easy to draw, have large animals, low hunter pressure, and have high success rates. The units that have more and bigger animals are in high demand and your odds of drawing are low with some areas giving less than 1% draw odds. Some units have a high draw rate, but that's because there are a limited number of elk, low harvest success rates, and usually have high hunter numbers. Hunters take some animals in these areas, but your hunt can be deemed successful if you simply see a legal animal.

So,

- Utilize your three options on the draw.
- You have three choices and all are valid. When they pull your application they will look at all three choices at the same time and the first one, in the order that you put them, that has licenses is where you go. You'll want to try for a high demand, big bull unit as your first choice, then go with higher percentage draws.

If you use a booking agent:

Booking agents are very knowledgeable about the hunts but may not have all of the details. If you have questions call the outfitters directly and talk to them. If you want a lodge hunt and the camp is a tent camp then ask the outfitter to be sure what it is. Outfitters are businessmen and most are very honest and truthful in what they do though some are not. As stated before, be honest. Just as you expect the outfitter to be honest, the outfitter expects you to do the same and explain what you are looking for. Some historic and true examples of this "honesty" are:

- "My son wants to hunt and has some leg issues but gets around well," then shows up using a walker.
- "I have been working out and can do two to three miles walking without any problem," then shows up with an oxygen tank.
- "I want to spot and stalk but won't get out of the truck." This hunter's idea of spot and stalk is to spot it out of the windshield and stalk it by getting out and shooting.
- "I don't think you know how to hunt elk because you have no heated blinds on the mountain."

- "I can shoot comfortably at 500 to 1000 yards." This is from a bench with sandbags and not prone on a pack or off a set of shooting sticks.
- "I know you said that no alcohol consumption during the day is allowed, and no alcohol is allowed in the hunting vehicles but Uncle Bob likes to ride around and drink beer all day and you would make an exception." No, Uncle Bob just cancelled his hunt.

Honesty

Just be honest on what you expect and how you like to hunt and your capabilities and we will suggest hunts for you or we will tell you that we do not hunt that way.

The best way to ensure you will not kill an animal

This is pretty simple: just insult your guide, degrade your guide, explain that you have hunted several times and know more than the guide, tell them that in some other state this is how we hunt, and overall make your guide not want to hunt with you. You may be very knowledgeable in your hunting ability and good at it and you may have been on numerous hunts but your guides hunt somewhere between 30 to 60 days a year and have done this for upwards of between 5 and 20 years. These guys know what to do and should be regarded with respect. They are very good at what they do and are going to try to get you an animal, whether a two-day guided or fully guided. If you make the guide dislike you or you alienate him, I can bet that you will not kill because he will not try. This is just human nature no matter what



profession you are in.

DO you harvest animals in the first two days of guide only hunts

Yes we do this very often during the seasons. The guides are there to hunt and to take animals during their time with you. The guides try hard and we try to send the best guides with you to get an animal.

If I am unsuccessful the first two days of the hunt can I hire the guide for additional days?

Possibly, but there are a number of items that have to occur. First is that a new contract must be prepared for the Game and Fish Department. Secondly, a new itinerary must be prepared for the Forest Service or the Bureau of Land Management and lastly someone needs to be around to prepare these documents. We also do not do it by the day. If you want a guide for extra days then you need to decide on how many days and we do it once.

Are seasons going to change dramatically next year?

The answer to this is no. New Mexico does a four year hunt structure and the only thing that changes is making the dates for the hunts correspond to the day of the week. Rifle and muzzleloader hunts start on Saturday and end on Wednesday in most cases.

Antelope - Public Land

PUBLIC LAND ANTELOPE HUNTS



We are again offering public land rifle antelope hunts and there are many good antelope units in New Mexico. These hunts will be "guided only" and for the entire three days of the rifle seasons or for the first three days of your archery hunt. Of course we will use the outfitter number to aid you in drawing. The license, when you draw it, will be valid for any public land with legal access throughout the unit. Due to the permit allocation system you will need to have a minimum of 7 available licenses, for one person, with the outfitter number to draw. The more applicants on the application, the more



available licenses for that unit need to be available. There are normally three season dates per unit and the easiest to draw are the last one but the odds of harvesting a really good animal is lower. You can mix and match units and season dates when you apply, if you want to.



ANTELOPE HUNTS PUBLIC LAND

Hunt Dates

Archery

August 10-18, 2024

Guiding will occur for the first three days of your hunt

Rifle

August 24-26, 2024

September 28-30, 2024

October 5-7, 2024

Hunt Prices

1x1: \$2,400 + tax

2x1 or 3x1: \$2,200 + tax

4x1: \$2,000 + tax

Application Deadline:
March 20, 2024



kiowahunting.com
575-445-9330

GAME MANAGEMENT UNIT 38 & VAUGHN, NEW MEXICO

This is our historic antelope ranch. We have been the exclusive outfitter on this ranch since 1996 and have taken countless antelope from the ranch and it continues to produce big animals. The ranch is large and offers hunts on over 78,000 acres. This is just an excellent antelope ranch with numerous return clients each year.

This ranch holds in excess of 350 antelope with approximately 100 bucks as of the last survey conducted. The management plan for this ranch is to limit harvesting to 20% of the buck population but our current plan is to harvest closer to 15%.

We are only offering one hunt this year and we are reducing the number of hunters that we are taking



by 50% because the drought is beginning to take a toll on the fawn crop survival rate. We have collectively decided, the ranch owners and us, that to preserve the quality of the species, we need to help them out and that is by avoiding over-harvesting. So with that said, we reduced the number of hunts that we are doing by 50% and have elected to hunt the later hunt over the early hunt. The reasoning for this is that the rut occurs in September and we would rather harvest the bucks after the breeding season than before the season.

The cost of the hunt includes:

Landowner authorization, guide, accommodations at a local motel, meals, courtesy transportation during the hunt, cleaning and skinning of the harvested animal.

The hunter is responsible for: personal gear, weapon, license.



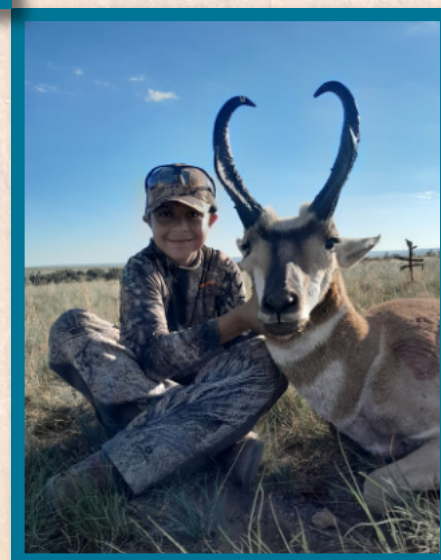
★ VAUGHN, NEW MEXICO ★

★ ANTELOPE HUNTS ★

Hunt Dates
Sept. 28-30, 2024

Hunt Prices
1x1: \$4,400 + tax
2x1: \$3,850 + tax

NO DRAW OR APPLICATION



Mule Deer - Private Land

Guaranteed Licenses

MULE DEER HUNT - UNIT 10

The private land ranch lays in GMU 10 in the central part of New Mexico and consists of 7,000 acres. The plan is to take only two hunters on the ranch for the season.

This ranch produces quality mule deer and deer in excess of 180 B&C have been killed on it. This hunt will be during the regular seasons as set by the Department of Game & Fish, and will consist of a lot of glassing to locate quality deer that you would want. The licenses for this hunt are across the counter and there is no draw for the tags.

This deer hunt can be added to an elk hunt as a combo but the hunts must occur simultaneously and during the seasons set by the Department of Game and Fish. The cost of the combo hunt will be \$11,000 plus tax and include the landowner authorizations for the hunt.



MULE DEER HUNTS UNIT 10

Hunt Dates

October 19-23, 2024
October 25-30, 2024
November 2-6, 2024

Hunt Prices

1x1: \$7,000 plus tax
2x1: \$6,000 plus tax

**NO DRAW OR
APPLICATION**



kiowahunting.com
575-445-9330

OLD MEXICO TROPHY MULE DEER HUNT



These hunts are for the giants of the desert that come from Sonora, Mexico, occurring between Guaymas and Hermosillo. Hunts are six days in length and are conducted by walking, vehicle, spot and stalk, and by hunting water holes. The hunts are highly successful. These mule deer are what the average American mule deer hunter can only dream of.



Everything is included in this package from the time you arrive in Mexico until you depart. You are responsible for arriving in Hermosillo, Mexico, for your personal gear and weapon, and gratuities.

This hunt can also be modified to allow for two mule deer or a mule deer and a Coues Whitetail. It can also be combined with a vacation for your significant other. This includes lounging on the beaches of San Carlos and enjoying the resort town. It was voted the Best Ocean View in the World out of 500, and is #1 of the Top 10 list by National Geographic.

Do not worry about visiting as Mexico is a safe destination in the interior. In the years that we have been doing these hunts we have never had any type of incident. This truly is the hunt and vacation that you'll want to come back to each year.



OLD MEXICO MULE DEER

Season Dates

November 15, 2024 to
February 15, 2025

Hunt Prices

1x1: \$14,000

50% up front to book your
hunt and the other 50% 30
days before arrival

**NO DRAW OR
APPLICATION**





Mule Deer - Public Land

New Mexico

NEW MEXICO PUBLIC LAND MULE DEER HUNTS



New Mexico has many excellent mule deer hunts on public land, but they are all by draw and the application must be submitted by March 20, 2024. We are licensed by the New Mexico National Forests, Bureau of Land Management Districts, and the New Mexico State Land office, so we can hunt in any unit that you desire. We are one of the few outfitters in the state that can do this for you. Most outfitters may be licensed in

one or two areas and they confine you to applying in those areas, if they are utilized. We will assist you with the application, offer hunt suggestions for you based on what you are wanting in a hunt, and allow you to use the outfitter number for free to improve your odds of drawing. We offer you two types of hunts on public land: a 2-day or a 5-day guide only hunt with no accommodations or meals.

We will attempt to operate out of a nearby town so that you can get a motel, or if you want to camp we will meet you each day at your camp.



hunts. There are several great units to apply for where they take some exceptional deer. There are other units that are just fun deer hunts. Remember that you have three choices and can mix and match units, weapon types, and time frames. Call us and we can work on a game plan for you.

The cost of the motel is your responsibility, but we will furnish all meals for your hunt.

We will hunt all three weapon types during the public land deer hunts, and for both Mule Deer and Coues Deer.

The type of hunt you are looking for and which species you desire will dictate as to what we would suggest you apply for. We will not be hunting during the September Archery deer hunts unless you also have an archery elk hunt for the same season. The reasoning is that we may not have the staff available for the deer hunts due to commitments on the elk



NM PUBLIC LAND MULE DEER HUNTS

Hunt Dates

Depending on unit draw

Hunt Prices

Guided only: 2-day

1x1: \$1,600 + tax

2x1: \$1,400 + tax

3x1: \$1,400 + tax

4x1: \$1,200 + tax

Guided only: 5-day

1x1: \$4,500 + tax

2x1: \$4,000 + tax

3x1: \$4,000 + tax

4x1: \$3,500 + tax

Application Deadline:
March 20, 2024

kiowahunting.com
575-445-9330

NEW MEXICO UNITS 23, 24 OR 27

This will be a public land hunt in either GMU 23, 24 or 27 for the Gray Ghost or the Coues Deer. These are prime Coues areas in New Mexico. We are licensed by the appropriate National Forests and Bureau of Land Management Districts and are one of the few that are licensed in Unit 27. If you apply for the Coues deer hunts **MAKE SURE** that you apply for the hunts listed as FAWTD. **DO NOT APPLY FOR FAMD.** FAWTD stands for Fork Antlered Whitetail Deer, this is the Coues hunt. FAMD stands for Fork Antlered Mule Deer.



We offer two types of archery hunts for Coues: a 2-day guided only hunt or a 5-day guided only hunt. The hunter will be responsible for all meals and motel or camp. If we are near a town, only in unit 24, we will hunt out of town from motels. The cost of the motel is your responsibility, but we will furnish all meals for your hunt. Remember these hunts are in January and very likely will have bad weather, that is why we guide only or may operate out of a motel.



COUES DEER

UNITS 23, 24 & 27

Hunt Dates

Hunt bag limit:

FAWTD for Coues deer

Archery

Jan. 16-31, 2025 Any five days

Rifle Hunts

November 16-20, 2024

December 7-15, 2024

Muzzleloader

October 26-30, 2024

Hunt Prices

Guide Only: 2-day

1x1: \$1,600 plus tax

2x1: \$1,400 plus tax

3x1: \$1,400 plus tax

4x1: \$1,200 plus tax

Guide Only: 5-day

1x1: \$4,500 plus tax

2x1: \$4,000 plus tax

3x1: \$4,000 plus tax

4x1: \$3,500 plus tax

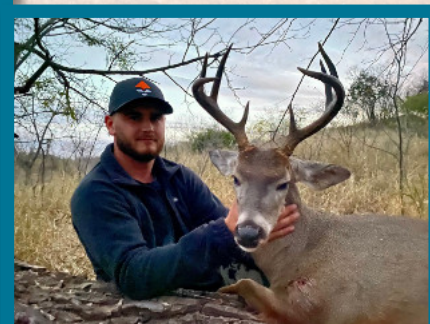
Application Deadline:
March 20, 2024

★ OLD MEXICO COUES DEER ★

The White-tailed Coues Deer is a sub species of White-tailed Deer. The majesty of the Sierra Madre mountains in the east part of Sonora makes this the perfect range for this exclusive animal. For the past three years in Mexico we have consistently killed deer that are 100" B&C and up with a combined average of 115" B&C.

Five full day hunt package includes: 1x1 guide, accommodations, all meals, and

ground transportation during the hunt. The cost of the hunt also includes airport pickup at Guaymas or Hermosillo Airport, transportation to all



OLD MEXICO

COUES DEER

Season Dates

November to December 2024, any 6 days

Hunt Prices

1x1: \$6,000

NO DRAW OR APPLICATION

hunting areas, hunting license/tag, gun permits, and field care of your trophy.

Price does not include:

Air transportation, imported liquor (however you can bring your own) and gratuities to guide and cook.

ORYX PUBLIC LAND ON-RANGE HUNTS

Kiowa Hunting Service offers hunts for free ranging Oryx (Gemsbok) on both the White Sands Missile Range (WSMR) and the McGregor Range. We are one of the few licensed outfitters operating on both of these ranges and have been on WSMR since outfitters were first legally allowed. The WSMR and the McGregor Range hunts are public land hunts and the licenses are allocated by draw. There are numerous hunts to apply for on the WSMR hunts beginning in September of 2024 and running through February of 2025.

WSMR hunts are 3-day hunts and McGregor Range hunts are 2-day hunts. WSMR hunts are once in a lifetime chance while McGregor Range hunts are not, so if you have already hunted on WSMR then you can try again on the

McGregor Range. The other options for someone that has held a WSMR permit is to apply for the broken horn hunt on WSMR or put in for an off range hunt as your last choice.

Notable changes for 2024 are that the Department has done the following:

1: increase the number of permits issued per hunt, 2: changed the "Iraq/Afghanistan veteran" hunts to "Any Veteran," and 3: youth licenses become "once in-a-youth" and are not once in-a-lifetime hunts anymore.

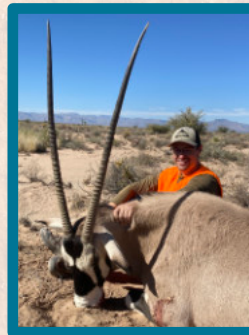
We offer two hunt packages for the WSMR hunts:

All Inclusive Package:

- Transportation to the hunt area from motel and transportation during the hunt utilizing our vehicles.
- Motel accommodations, 1x1 hunt single occupancy, 2x1 hunt double occupancy.
- All meals and snacks from the night before the hunt to the end of the hunt.
- Guide for either a 1x1 or 2x1 hunt.

No-Frills Package:

- Transportation to the hunt area from motel and transportation during the hunt utilizing our vehicles.
- Lunch day meal and all snacks and drinks during the hunt.
- Guide for either a 1x1 or 2x1 hunt.



W. S. M. R. & MCGREGOR RANGE HUNTS

White Sands Hunt Dates Any weapon

Sept. 2024 - March 2025

McGregor Range Hunt Dates Any weapon

December 14-15, 2024
January 4-5, 2025

Hunt Prices

Inclusive Package

2x1: \$3,000 + tax

1x1: \$3,500 + tax

No Frills Package

2x1: \$2,500 + tax

1x1: \$3,000 + tax

Application Deadline:
March 20, 2024

- Hunter is responsible for their own accommodations, meals, and cost of trophy preparation if desired.

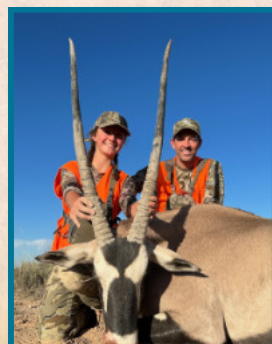


ORYX PUBLIC LAND OFF RANGE HUNTS

We will be conducting off range hunts during the year. These hunts are open anywhere on public land for an entire month. We will guide you for five days and will be doing only the No-Frills package for these hunts. For details about this package see above on the On-range hunts.

At the time of the hunt we will decide on what hunt area we would like to concentrate. On most hunts you will have additional personnel scouting and trying to locate an Oryx for you. The population off range does not compare with on range hunts, but the odds of drawing are good.

The success rate for the off range hunts was 60% last year so the Department has increased the number of licenses issued by 18% for this year. If you want to take an Oryx, then I would apply for one of these hunts as a second or a third choice. The difference between the "on-range" hunts and "off-range" are fairly simple: for on-range hunts you can be picky and still have a good opportunity to take a really nice Oryx (86% success rate), for off-range hunts you cannot be picky and if the Oryx is anything close to what you want you better get after it. The average days hunted off range was 5.5 days per hunter. This hunt and the McGregor Range hunt open up your options.



OFF RANGE ORYX HUNTS

Hunt Dates

June 2024 to March 2025, any five days

Hunt Prices

No Frills Package:

1x1: \$3,500 + tax

2x1: \$3,000 + tax

Application Deadline:
March 20, 2024

kiowahunting.com
575-445-9330



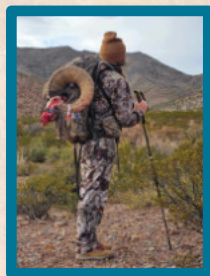
DESERT BIGHORN SHEEP - NEW MEXICO

New Mexico's desert bighorn sheep are doing well. We can conduct hunts on any Bighorn Sheep area that you would like to apply for.

We have staff that are familiar with the hunt areas and can provide you with an excellent and successful hunt. These hunts begin in October and run through March of the following year. The dates depend on the unit drawn.

Cost of the hunt will include: Our outfitter number and assistance in applying for the license in the draw, daytime meals and snacks, courtesy transportation during the hunt, guide and spotter service, trophy preparation of your animal and retrieval of the animal.

The hunter is responsible for: Transportation to the nearest agreed upon town, motel, morning and evening meals, personal gear, weapon, etc. and the cost of the license.



DESERT BIGHORN SHEEP

Hunt Prices

New Mexico 7-Day Hunt

\$7,500 + tax

Season dates depend on Unit and range from August through March.

Application Deadline:
March 20, 2024

ROCKY MOUNTAIN BIGHORN SHEEP

NEW MEXICO

We offer hunts for these animals in all available units except in unit 45 (Pecos). You will be greeted by a team of people who will help you with your hunt. Depending on the unit drawn it may be a horseback hunt or a backpack style hunt. Please feel free to contact us about the different hunts and we will attempt to pair you up with a hunt that will work for you. These hunts begin in August and run through January, depending on the unit drawn.

Draw information: You can apply for both Rocky Mountain sheep and Desert Sheep on the same application. For each hunt code (Rocky Mountain and Desert) you get to select three hunt areas, which will have different dates corresponding to them. When your application is pulled, the Department will look at each hunt code and area in the order that you list them and they will review all of your choices at the same time.

ROCKY MOUNTAIN BIGHORN SHEEP

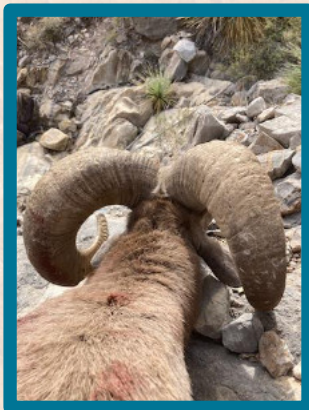
Hunt Prices

New Mexico 7-Day Hunt

\$7,500 + tax

Season dates depend on Unit and range from August through March.

Application Deadline:
March 20, 2024



DESERT BIGHORN SHEEP - MEXICO

Two types of sheep hunts are offered in Mexico. The first type is a "free range" hunt and the second is a "high fence" hunt. All of the hunts, regardless of type, are conducted on a 1x1 basis with the normal method of hunting being glassing, spotting, and stalking. High rack trucks are utilized to get around the different ranches. Depending on the condition of the hunter, sitting on watering areas with blinds are also utilized during the hunt. All licenses are guaranteed with no draw or applications.

The hunts are all 10 day hunting packages and include a 1x1 guide service, accommodations for the hunt, all meals, ground transportation to and from the Guaymas or Hermosillo airports to all hunting areas, hunting license/tag, gun permit, soft drinks, beer, and field care of the trophy. The price of the hunt does not include air transportation to the Mexico airport, CITES permit, taxidermy and trophy export fees, imported liquor (you can bring your own) and gratuities to the guides and cook staff.

BIGHORN SHEEP OLD MEXICO

Hunt Prices

Mexico 10-Day Hunt

Free Chase

\$65,000

High Fence

\$45,000

Season dates depend on Unit and range from August through March.

NO DRAW OR APPLICATION

IBEX



New Mexico's Florida Mountain is the only place in the Western Hemisphere where pure blood, unfenced, free ranging Persian (aka Bezoar) Ibex are hunted. Our staff includes many of the former

number, which is available on the Kiowa website, improves your draw odds substantially.

Currently the Ibex population is at a low compared to past years. To address this situation the

Department has decreased the number of licenses available, have changed the Muzzleloader hunt from a fifteen day hunt to a seven day hunt, and have banned scopes on muzzleloaders.

Drawing a bow Ibex license is much easier than a firearm license. For most bow hunters the January hunt is a better fit into their schedule than one in October, but when compared to the non-resident January bow hunt, the outfitted January bow hunt odds are more than twice as high and the outfitted October bow hunt odds are more than six times as high.

Cost of hunt includes: Use of our outfitter number on your application, snacks & drinks to carry, all portable meals on the mountain, evening meals, courtesy transportation during the hunt, the most experienced Ibex guides and spotters in New Mexico, assistance with retrieval of your animal, and capping for trophy preparation.

The hunter is responsible for: Applying for the license with our help, lodging, the cost of the license, a daypack, hunting gear and transportation to and from the hunt near Deming, NM.



Kauffman Outfitters personnel. With more than 2,000 man-days of ibex hunting experience, our strategies consider hunter density, hunt type (rifle or bow), wind conditions, seasonal vegetation changes, precipitation, cougar sign, and our hunter's experience level. We can accommodate hunters from youth through old age and those with some physical limits. Note that the youth hunt occurs during the school Christmas break.

Safari Club International (SCI) keeps worldwide trophy statistics for Ibex and their record book shows that the highest scoring Bow or Muzzle Loader kills and the second highest scoring Rifle kill were taken in New Mexico. Within New Mexico we have guided 5 of the top 6 bow kills, 87% of the guided bow kills, 54% of all bow kills (guided or not) and 35% of all the Ibex entries (any weapon) in the book. Only 9% of the entries are attributed to other outfitters that are still in business. That's why people hunt with Kiowa!

With Kiowa you could kill several Ibex with a bow before drawing a rifle tag. Despite rumors to the contrary, short bow shots are possible for billy Ibex.

Drawing details:

Applying with the Kiowa Outfitter



IBEX

Hunt Dates

Choose a minimum of 5 days or more

Rifle: November 15-29, 2024

Youth Hunt:

December 27, 2024 to January 10, 2025

Archery: October 1-15, 2024
January 15-29, 2025

Muzzleloader:

February 17-23, 2025

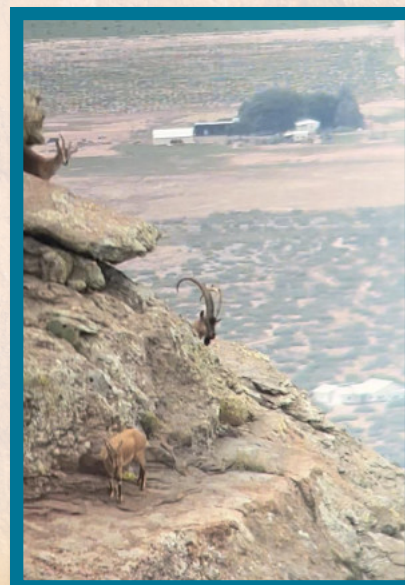
Hunt Prices

\$7,500 + tax for any 5 days

\$9,300 + tax for any 7 days

Additional days at a rate of \$900 per day may be booked beyond the contracted number of days

Application Deadline:
March 20, 2024



kiowahunting.com
575-445-9330

PUBLIC LAND BARBARY SHEEP (AOUDAD)



This hunt is for free ranging Barbary Sheep (Aoudad) in New Mexico. It is an excellent hunt for high quality animals. This is a "park the vehicle and hike" style hunt and the vehicle is seldom seen again until dark. This is a physically challenging hunt with numerous miles of walking done each day.

New Mexico Game and Fish has made some changes for next year and this will make it easier for you to draw a tag. The number of tags are going up by 20% due to an increase in populations, and the number of hunts will increase while the number of days hunting will be reduced from 14 down to 5.

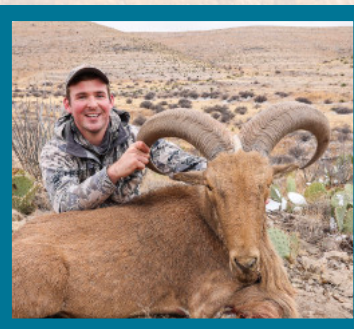
A hunt unit is multiple units combined into one and we hunt in all three units. These units are comprised of **1:** Unit 28 McGregor Range, **2:** Units 29 and 30, and **3:** Units 32, 36, and 37. Each of these hunt units will have multiple hunt dates and you can mix or match hunt units on your application and all will be valid to be drawn.

Cost of the hunt includes: courtesy transportation during the hunt, drinks, snacks, and lunches during the hunt.

The hunter is responsible for: travel to the city that we choose to operate out of for the hunt or other hunt areas, motel accommodations, meals, personal gear, and licenses.

Hunters should bring comfortable day packs to carry water, storm clothing, and other personal items.

Public land licenses are by draw. The odds of drawing this tag utilizing an outfitter number are excellent.



PUBLIC LAND BARBARY SHEEP

Hunt Dates

There are numerous hunt dates. Our hunts are five days in length.

Hunt Prices

1x1: \$4,500 + tax

2x1: \$4,000 + tax

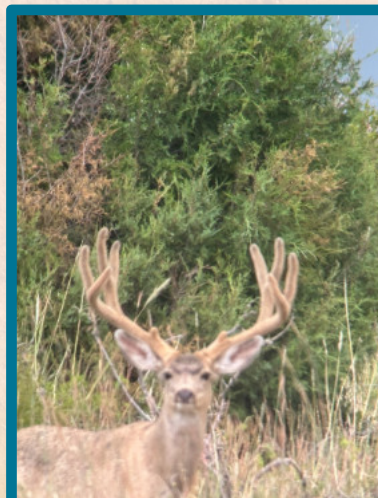
Application Deadline:
March 20, 2024

Where We Hunt

Kiowa Hunting Service takes you to unique and exciting locations throughout New Mexico and Colorado. Enjoy the stunning scenery and varied terrain as you hunt.



1. Elk - Private, Colorado
2. Elk - Unit 52 Public
3. Elk - Unit 51 Public
4. Rocky Mountain Bighorn Sheep
5. Elk - Unit 7 Private
6. Elk - Unit 10 Private
7. Elk - Gila National Forest, All Units
8. Coues & Mule Deer, Desert Bighorn Sheep
9. Ibex-Public
10. Desert Bighorn Sheep
11. Oryx - McGregor Range
12. Oryx - Rhodes Canyon
13. Oryx - Stallion Range
14. Elk - Unit 34 Public
15. Elk - Unit 36 Public
16. Elk - Unit 37 Public
17. Aoudad/Barbary Sheep
18. Mule Deer - Unit 31 and 33 Public
19. Antelope - Private



kiowahunting.com
575-445-9330



P.O. Box 428

Raton, New Mexico 87740

Phone: 575-445-9330 Fax: 575-445-0116

Cell: 575-779-5220

REFERENCES

All references are past hunters, both successful and unsuccessful. For additional references please visit our website at www.kiowahunting.com or contact us.

Doug Duey
San Antonio, TX
303-968-8518
Pub. Elk Rifle, Pub.
Deer, Pvt. Antelope

Tom Huff
Pepperell, MA
508-723-4439
Pub. Elk Bow – 2 day

James Laster
Triangle, VA
571-477-3754
Antelope, Pvt. Elk

Steve Ufheil
Germantown Hills, IL
409-253-0457
Public Land
Elk - Muzzleloader

Christopher Leon
Cypress, TX
281-910-8341
On Range Oryx

Wilmeth Deyo
Crown Point, NY
518-570-8057
Private Land Elk

Tate Van Houten
Ankeny, IA
515-371-8619
Public land youth elk

Robb Allred
Waxahachie, TX
214-608-7860
Public land Elk

John Nassar
Phoenix, AZ
602-820-2405
Public land Elk

Dan Cobb
Highland Village, TX
469-835-0006
Antelope

Miguel Mata
Queen Creek, AZ
602-317-8760
Antelope

Michael Conger
Nibley, UT
435-760-5266
Public land youth
antelope and public
land deer

Wesley Stark
Tucson, AZ
520-349-5446
Public land deer
On Range Oryx
Barbary Sheep

Jason Lange
Elkhorn, NE
40-960-0376
Public land elk & deer

Tom Erny
Troup, TX
930-780-5147
Public land elk

Steve Adams
Phoenix, AZ
480-797-0943
Private Colorado elk

John Finch
Canton, MI
313-550-8600
Public & Private elk
On Range &
McGregor Oryx

Clifford Trovillo
Franklinville, NY
609-774-7011
Public land elk

Sebastian Marino
Swedesboro, NY
609-774-7011
Public Land Elk

Chris Vincent
Ramona, CA
760-519-1568
Public Land Elk

Austin Revoir
Ephraim, UT
435-469-0483
Public Land Elk

Eric Allison
Lakewood, WA
253-297-5665
Public Land Elk

Michael Myers
Montrose, PA
570-269-7404
Oryx Youth Hunt

Landon Marino
Austin, TX
512-658-3793
Oryx Youth Hunt

Wayne Mongold
Woodstock, VA
304-282-0505
On Range Oryx

Aaron McHargue
Canyon, TX
308-940-2022
Off Range Oryx

Randy Paul
Mountain Home, TX
210-300-3211
Public land Elk & Deer

Kevin & Melody Kraft
Casper, WY
307-262-8984
Public land elk

Randi & Michael Winther
Las Vegas, NV
952-200-5358
Oryx & Barbary Sheep
McGregor

We would like to welcome you to quality hunts with Kiowa Hunting Service. We have been in the hunting business for over 36 years and continue to expand to meet your hunting expectations. Kiowa Hunting Service is a full services organization. Whether you are looking for big game or exotics, we can help you collect that special mount for your wall.

"This institution is an equal opportunity provider."
Kiowa Hunting Service operates under various permits in/on:

- Carson National Forest
- Cibola National Forest
- Coronado National Forest
- Gila National Forest
- Lincoln National Forest
- Santa Fe National Forest
- Las Cruces District - BLM
- Socorro District - BLM
- Farmington District - BLM
- Pecos District - BLM
- Taos District - BLM
- New Mexico State Land Office
- White Sands Missile Range

We Proudly Accept

